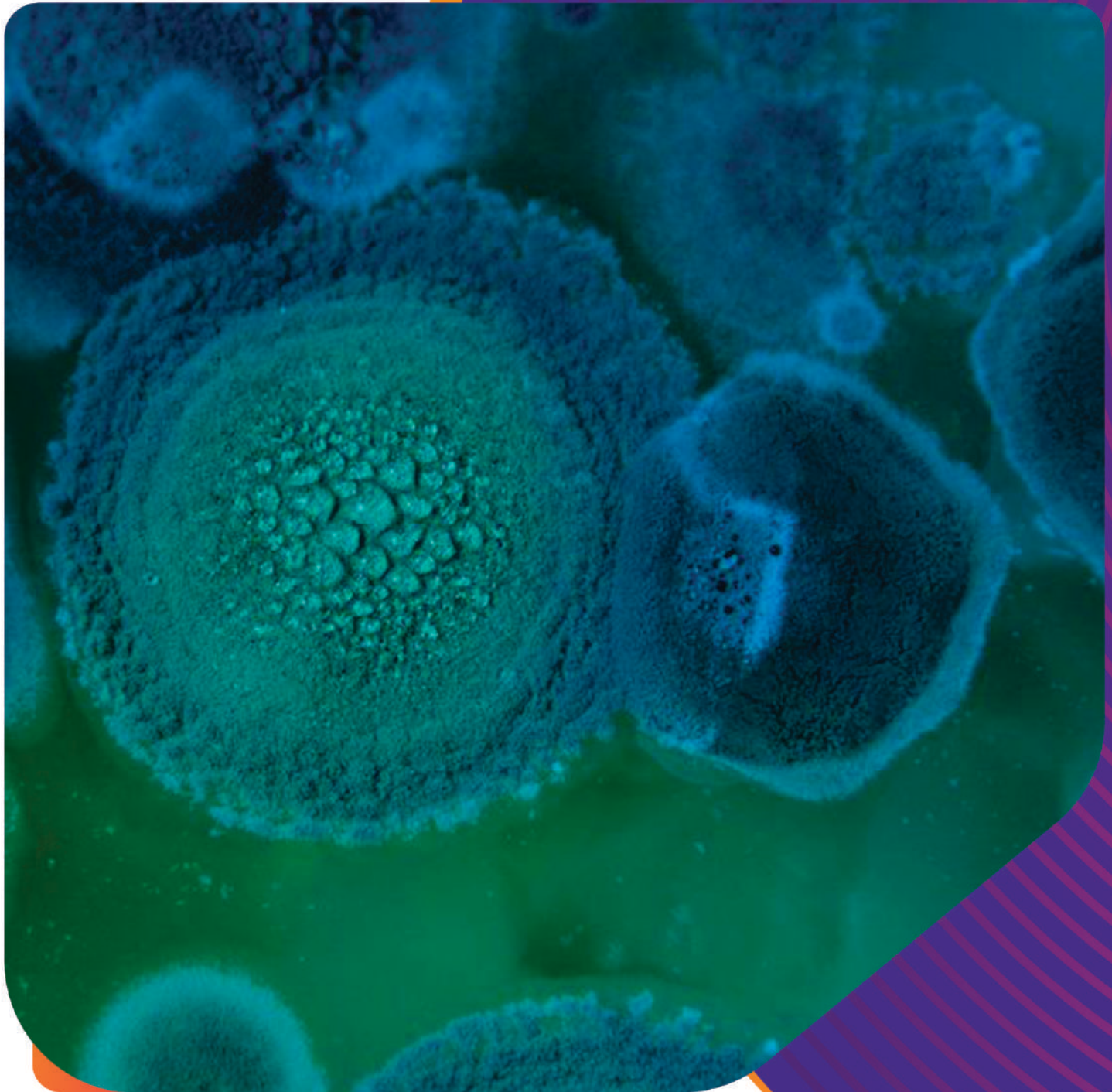




**Neuberg**  
DIAGNOSTICS

• India • UAE • South Africa • USA

# *Neu* INSIGHTS



## **Fungisure**

**One stop solution for Microbiology**

Serial number : 014 Edition : 1. 2022



# Tests for Fungal Infection

**01**

## Microbiological Tests

KOH Examination

Calcofluor white stain

Fungisure (Fungal) culture

Advanced Fungisure Identification by MALDI TOF

Fungisure MIC Sensitivity

**02**

## Serological Tests

Fungitell (1-3, Beta-D-Glucan) assay

Aspergillus antigen (Galactomannan)

**03**

## Molecular Tests

Pneumocystis jirovecii (PCP) PCR

Mucorsure (Mucorales) PCR

# Microbiological Tests



**Specimen type:**  
Any specimen except blood and bone marrow

## KOH Examination

Microscopic detection of fungal infection

## Calcofluor white stain

Special stain  
Fluorescent Microscopic highly sensitive detection method

## Fungisure (Fungal) culture

### Fungisure Conventional culture



#### Indication

For detection and growth of any Yeast (Candida, Cryptococcus etc.) or Mould (Aspergillus, Mucor, Dermatophytes etc.)



#### Sample Type

Skin, Hair, Pus, Tissue, Sputum, BAL, Thick fluid, Any other specimen except blood and bone marrow



#### TAT

2 weeks

### Fungisure Bactec automated culture



#### Indication

For Detection and growth of Yeast or hyphal fungus from blood and fluids



#### Sample Type

Blood, Bone marrow, sterile site body fluids, Pus, Tissue



#### TAT

2 weeks

## Advanced Fungisure Identification by MALDI TOF

MALDI TOF is Highly accurate, rapid and advanced Mass spectrometry based identification system



### Indication

Identification of yeast, hyphal fungus up to species level for accurate management of fungal infection.



### Sample Type

Cultured growth of Yeast or Hyphal fungus



### TAT

1-4 hours for Yeast;  
48 hours for Hyphal fungus

## Fungisure MIC Sensitivity



### Indication

Fungal susceptibility testing of Candida, Cryptococcus, Aspergillus, Penicillium by Micro broth dilution method



### Specimen

Pure culture growth of Yeast or Hyphal fungus



### TAT

2-3 days

### List of Antifungals tested:

Anidulafungin

Micafungin

Caspofungin

Flucytosine

Posaconazole

Voriconazole

Itraconazole

Fluconazole

Amphotericin-B



## Serological Tests

### Fungitell (1-3, Beta-D-Glucan) assay



**Indication**  
For diagnosis of  
Invasive fungal  
infections



**Sample Type**  
Serum  
(Serum separator tube)



**TAT**  
Batch on Wednesday &  
Saturday; report by 7pm  
of respective batch day

### Aspergillus antigen (Galactomanan)

For diagnosis of Invasive Aspergillus infection



**Method**  
ELISA



**Sample Type**  
Serum  
(Serum separator tube)



**TAT**  
5 hours

# Molecular Tests

## Pneumocystis jirovecii (PCP) PCR



**Sample Type**  
BAL (Bronchoalveolar lavage),  
Bronchial wash,  
Sputum, Tissue



**TAT**  
24 hours

## Mucorsure (Mucorales) PCR

Molecular detection of Mucorales like Mucor, Rhizopus etc.



**Sample Type**  
Serum, body fluids,  
pus, tissue



**TAT**  
24 hours

# PARTNERS IN HEALTH



## **DR. BHAVINI SHAH**

Director : Neuberg Supratech Reference  
Laboratories.(NSRL)

Director : Research and Academics (NSRL)

Head : Department of Microbiology and  
Infectious Molecular Microbiology

[bhavini.shah@supratechlabs.com](mailto:bhavini.shah@supratechlabs.com)

+91-9824010830



## **DR. KRUTARTH SHAH**

Consultant Microbiologist

[krutarth.shah@supratechlabs.com](mailto:krutarth.shah@supratechlabs.com)

+91-9924644336



## **DR. SANDIP SHAH**

Consultant Pathologist

M.D. (Pathology & Bacteriology)

Laboratory Director

[drsandip@neubergdiagnostics.com](mailto:drsandip@neubergdiagnostics.com)

079-40408181

FOR MORE DETAILS, CONTACT US AT



**079 4040 8181**

[neubergdiagnostics.com](http://neubergdiagnostics.com)



**Neuberg**  
DIAGNOSTICS

• India • UAE • South Africa • USA